

ANTONIO CROCE  
MILANO

*Sunset City*

AW 20-21



















































## Pag. 3



### COAT

STYLE: COLMAN L  
FABRIC: TE20.0006 FL1 - WOOL  
CASHMERE FABRIC + FLOCK  
COLOR: 1003 LATTE

### SCARF

STYLE: NOAH 138X138 CM  
FABRIC: TE20.0046 ST  
L - LEOPARD CARRÉ  
WOOL AND SILK  
COLOR: 9035 NERO/TAWNY CAMEL

### SHOES

STYLE: ROZANA  
FABRIC: PE61.4001 - LEATHER  
COLOR: 1006 OFF WHITE

## Pag. 4



### COAT

STYLE: COLMAN  
FABRIC: TEC20.0072 - DOUBLE  
FABRIC - TEXTURE LEOPARD  
COLOR: 3090 NEW CAMEL/NERO

### SHOES

STYLE: ROZANA  
FABRIC: PE61.4001 - LEATHER  
COLOR: 1006 OFF WHITE

## Pag. 5



### BODY

STYLE: BACKMORE  
FABRIC: TE30.0061 PL -  
CREPE DE CHINE  
COLOR: 9000 NERO

### TROUSERS

STYLE: PIKI A2  
FABRIC: TEC30.0082 - CADY  
COLOR: 9000 NERO

### SHOES

STYLE: RIANNA BI 85  
FABRIC: PE61.1001 - KID SUEDE  
+ PATENT GOATSKIN  
COLOR: 9000 NERO

## Pag. 6



### BODY

STYLE: BACKMORE  
FABRIC: TE40.0032 ST MAXI L -  
SILK NYLON LUREX -  
LEOPARD PRINT  
COLOR: L 9000 NERO

### TROUSERS

STYLE: PRUE  
FABRIC: PE60.0048 - SOFT GLOVE  
LEATHER  
COLOR: 9000 NERO

### SHOES

STYLE: ROZANA  
FABRIC: PE61.4001 - LEATHER  
COLOR: 9000 NERO

## Pag. 7



### BODY

STYLE: BACKMORE  
FABRIC: TE40.0032 ST MAXI L -  
SILK NYLON LUREX -  
LEOPARD PRINT  
COLOR: L 9000 NERO

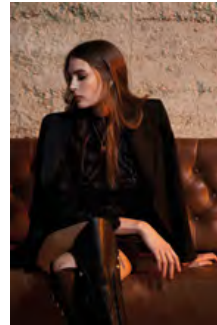
### TROUSERS

STYLE: PRUE  
FABRIC: PE60.0048 -  
SOFT GLOVE LEATHER  
COLOR: 9000 NERO

### SHOES

STYLE: ROZANA  
FABRIC: PE61.4001 - LEATHER  
COLOR: 9000 NERO

## Pag. 8



### JACKET

STYLE: LORENA LU A2  
FABRIC: TEC30.0082 - CADY  
COLOR: 9000 NERO

### LIGHTWEIGHT SWEATER

STYLE: ESIA  
FABRIC: KNC30.0001 -  
LACE KNITWEAR  
COLOR: 9000 NERO

### TROUSERS

STYLE: PRUE A2  
FABRIC: TEC30.0082 - CADY  
COLOR: 9000 NERO

### SHOES

STYLE: ROZANA  
FABRIC: PE61.4001 - LEATHER  
COLOR: 9000 NERO

## Pag. 9



### JACKET

STYLE: LORENA LU A2  
FABRIC: TEC30.0082 – CADY  
COLOR: 9000 NERO

### LIGHTWEIGHT SWEATER

STYLE: ESIA  
FABRIC: KNC30.0001 –  
LACE KNITWEAR  
COLOR: 9000 NERO

### TROUSERS

STYLE: PRUE A2  
FABRIC: TEC30.0082 - CADY  
COLOR: 9000 NERO

### SHOES

STYLE: ROZANA  
FABRIC: PE61.4001 - LEATHER  
COLOR: 9000 NERO

## Pag. 10



### JACKET

STYLE: GENET LU  
FABRIC: TE30.0082 FL2 –  
CADY FLOCK PRINT  
COLOR: 9090 NERO/NERO

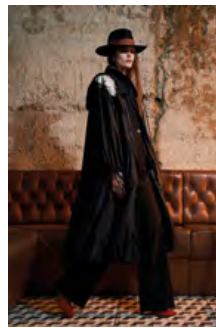
### TROUSERS

STYLE: PISA LU  
FABRIC: TE30.0082 FL2 –  
CADY FLOCK PRINT  
COLOR: 9090 NERO/NERO

### SHOES

STYLE: RHEA CB  
FABRIC: TE20.0006 FL1 –  
FLOCKED FABRIC  
+ CALF LEATHER  
COLOR: 1003 LATTE

## Pag. 11



### RAINCOAT

STYLE: CRISTABEL L PD1  
FABRIC: TE30.0020 – NYLON –  
PLACED MAGNOLIA PRINT  
COLOR: 9000 NERO

### JACKET

STYLE: GODEBERTA A2  
FABRIC: TEC30.0082 - CADY  
COLOR: 9000 NERO

### TROUSERS

STYLE: PIKI A2  
FABRIC: TEC30.0082 - CADY  
COLOR: 9000 NERO

### SHOES

STYLE: REESE BI 105  
FABRIC: PE61.1001 – KID SUEDE  
+ PATENT GOATSKIN  
COLOR: 2506 PUMPKIN ORANGE

## Pag. 12



### COAT

STYLE: COLMAN L KD  
FABRIC: TE20.0073 –  
DIAGONAL WOOL FABRIC  
COLOR: 9014 NERO/BIANCO

### SHOES

STYLE: RHEA CB  
FABRIC: TE20.0006 FL1 – FLOCKED  
FABRIC + CALF LEATHER  
COLOR: 1003 LATTE

## Pag. 13



### SHIRT

STYLE: BELL  
FABRIC: TE40.0030 ST FM –  
CREPE DE CHINE –  
MAGNOLIA PRINT  
COLOR: FM 9000 NERO

### TROUSERS

STYLE: PRUE  
FABRIC: PE60.0048 – SOFT GLOVE  
LEATHER  
COLOR: 9000 NERO

### SHOES

STYLE: ROZANA  
FABRIC: PE61.4001 - LEATHER  
COLOR: 1006 OFF WHITE

## Pag. 14



### SHIRT

STYLE: BRATY E1  
FABRIC: TEC10.0053 - POPELINE  
COLOR: 1000 BIANCO

### TROUSERS

STYLE: PINSI LU A1  
FABRIC: TEC30.0082 –  
CADY – ENVERS SATIN  
+ TRIMMING DETAILS A1  
COLOR: 9000 NERO

## Pag. 15



### DOWN

STYLE: CUVIER  
FABRIC: TE30.0020 ST FM –  
NYLON – MAGNOLIA PRINT  
COLOR: FM 1013 SNOW WHITE

### TROUSERS

STYLE: PAULA LU  
FABRIC: TE30.0082 FL2 –  
CADY FLOCK PRINT  
COLOR: 1013 LATTE/NEUTRO

### SHOES

STYLE: RHEA CB  
FABRIC: TE20.0006 FL1 –  
FLOCKED FABRIC  
+ CALF LEATHER  
COLOR: 1003 LATTE

## Pag. 16



### COAT

STYLE: CLANEL CB  
FABRIC: TE20.0067 – DOUBLE  
FABRIC + TEXTURE LEOPARD  
COLOR: 2010 SULPHUR

### DOWN

STYLE: CRISTAN  
FABRIC: TE30.0020 ST FM –  
NYLON – MAGNOLIA PRINT  
COLOR: FM 1013 SNOW WHITE

### SHOES

STYLE: ROZANA  
FABRIC: PE61.4001 - LEATHER  
COLOR: 1006 OFF WHITE

## Pag. 17



### BODY

STYLE: BESSYL  
FABRIC: TE40.0032 ST FM –  
SILK NYLON LUREX –  
MAGNOLIA PRINT  
COLOR: FM 9000 NERO

### TROUSERS

STYLE: PALMI LU  
FABRIC: TE30.0082 FL2 –  
CADY FLOCK PRINT  
COLOR: 1013 LATTE/NEUTRO

### SHOES

STYLE: RIANNA 105  
FABRIC: PE61.4001 - LEATHER  
COLOR: 1006 OFF WHITE

## Pag. 18



### DOWN

STYLE: CRISTY  
FABRIC: TE40.0032 ST FM – SILK  
NYLON LUREX –  
MAGNOLIA PRINT  
COLOR: FM 9000 NERO

### SHOES

STYLE: ROZANA  
FABRIC: PE61.4001 - LEATHER  
COLOR: 1006 OFF WHITE

## Pag. 19



### JACKET

STYLE: GODEBERTA A2  
FABRIC: TEC30.0082 – CADY  
COLOR: 2506 PUMPKIN ORANGE

### DRESS

STYLE: ASTRID  
FABRIC: TE40.0032 ST FM – SILK  
NYLON LUREX – MAGNOLIA PRINT  
COLOR: FM 9000 NERO

### TROUSERS

STYLE: PALMI  
FABRIC: TEC30.0082 - CADY  
COLOR: 2506 PUMPKIN ORANGE

### SHOES

STYLE: RIANNA BI 85  
FABRIC: PE61.1001 – KID SUEDE  
+ PATENT GOATSKIN  
COLOR: 9000 NERO

## Pag. 20



### COAT

STYLE: CLEOFFE  
FABRIC: PE60.0048 –  
SOFT GLOVE LEATHER  
COLOR: 9000 NERO

### SCARF

STYLE: NOAH 138X138 CM  
FABRIC: TE20.0046 ST L –  
LEOPARD CARRÉ WOOL  
AND SILK  
COLOR: 9025 NERO/ORANGE

### SHOES

STYLE: ROZANA  
FABRIC: PE61.4001 - LEATHER  
COLOR: 9000 NERO

## Pag. 21



### COAT

STYLE: ELMAN FC  
FABRIC: KN30.0005 -  
LEOPARD KNITWEAR  
COLOR: 9035 NERO/TAWNY  
CAMEL

### SHOES

STYLE: ROZANA  
FABRIC: PE61.4001 - LEATHER  
COLOR: 9000 NERO

## Pag. 22



### COAT

STYLE: CILY KD  
FABRIC: TEC30.0082 - CADY  
COLOR: 9000 NERO

### CAPE

STYLE: MARICELLE  
FABRIC: TEC20.0072 -  
DOUBLE FABRIC -  
TEXTURE LEOPARD  
COLOR: 2090 SULPHUR/NERO

### SHOES

STYLE: ROZANA  
FABRIC: PE61.4001 - LEATHER  
COLOR: 9000 NERO

## Pag. 23



### COAT

STYLE: CALICANTO CB  
FABRIC: TEC20.0006 -  
WOOL CASHMERE FABRIC  
+ FLOCK FL2  
COLOR: 3090 NEW CAMEL/NERO

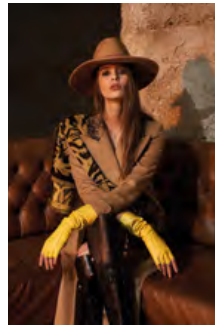
### SCARF

STYLE: NOAH 138X138 CM  
FABRIC: TE20.0046 ST L -  
LEOPARD CARRÉ WOOL AND SILK  
COLOR: 9020 NERO/SULPHUR

### SHOES

STYLE: ROZANA  
FABRIC: PE61.4001 - LEATHER  
COLOR: 9000 NERO

## Pag. 24



### COAT

STYLE: CALICANTO CB  
FABRIC: TEC20.0006 -  
WOOL CASHMERE FABRIC  
+ FLOCK FL2  
COLOR: 3090 NEW CAMEL/NERO

### SCARF

STYLE: NOAH 138X138 CM  
FABRIC: TE20.0046 ST L - LEOPARD  
CARRÉ WOOL AND SILK  
COLOR: 9020 NERO/SULPHUR

### SHOES

STYLE: ROZANA  
FABRIC: PE61.4001 - LEATHER  
COLOR: 9000 NERO

Show-room Panorama Moda:  
[info@panoramamoda.it](mailto:info@panoramamoda.it)

ANTONIO CROCE  
MILANO