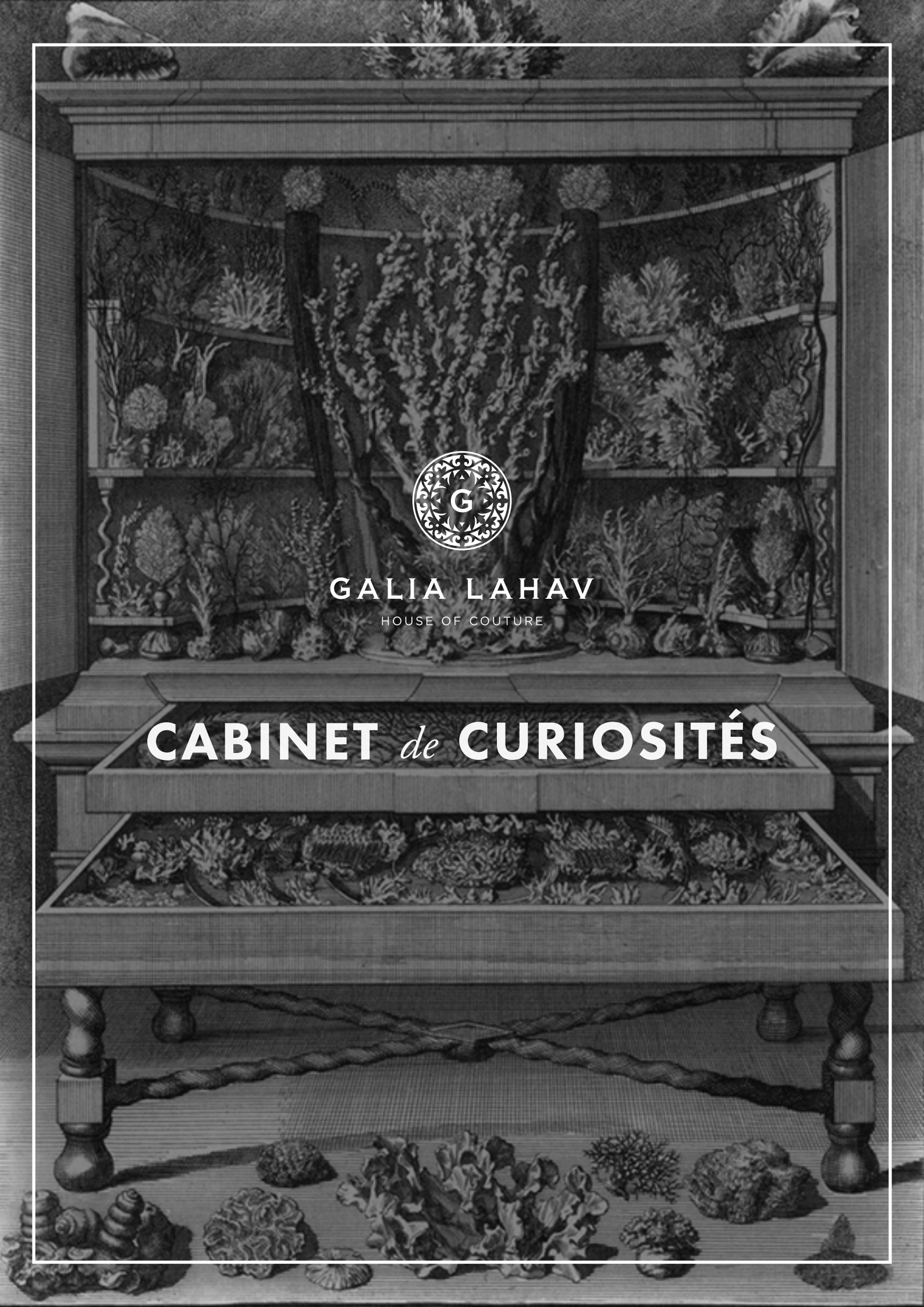




GALIA LAHAV
HOUSE OF COUTURE

CABINET *de* CURIOSITÉS



CABINET *de* CURIOSITÉS

Galia Lahav presented a couture evening collection in the gardens of one of the most prestigious secondary and preparatory schools in France- Lycée Henri IV and, is proud to share it with you,



ABOUT THE COLLECTION

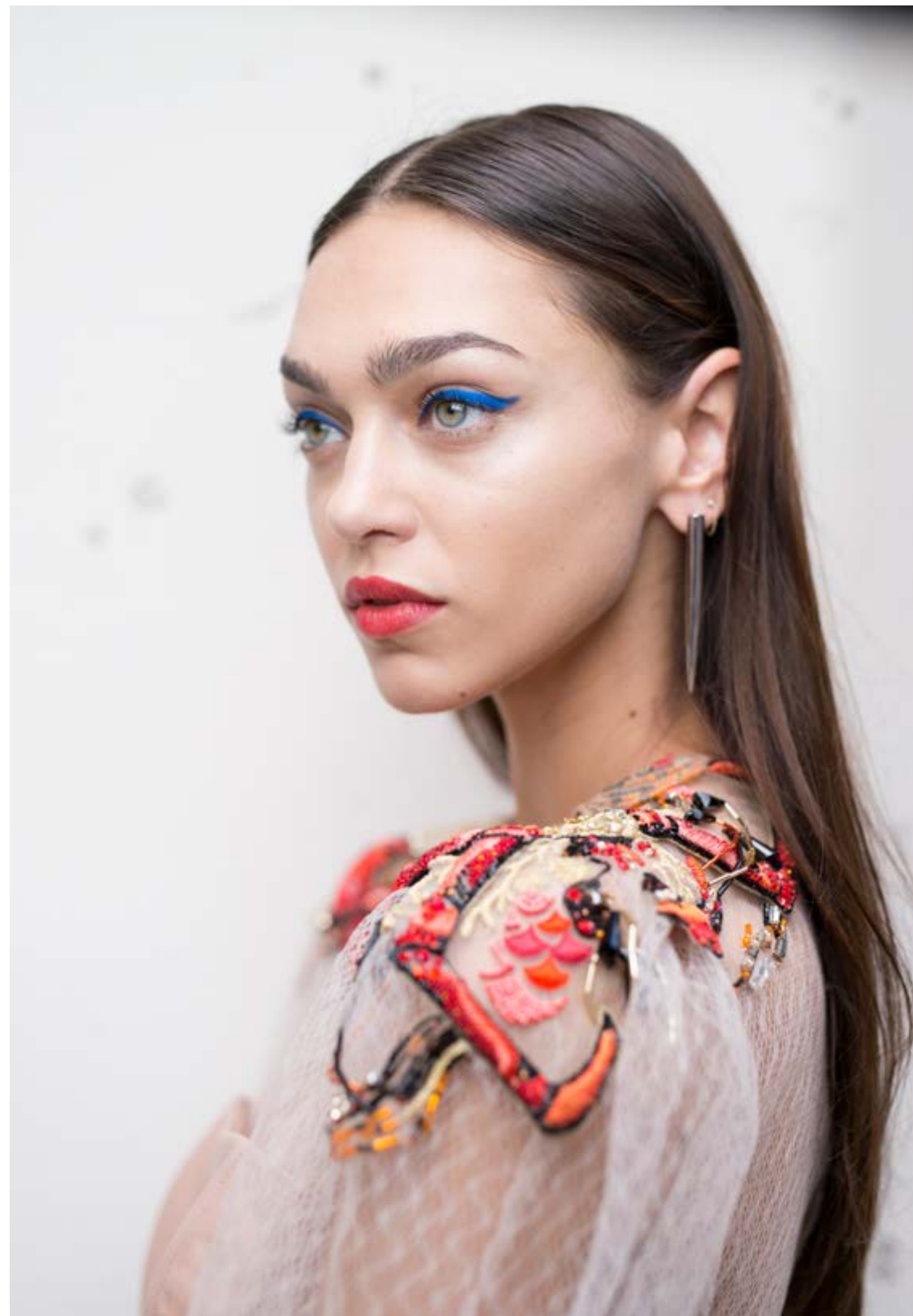
Before modern science, specimens of all types went undefined, collected loosely in cabinet de curiosités; A veritable wonderland, these collections were composed of elements of the sea and wonders of the Earth.

Science sought to organize the chaos, aiming to categorize each and every new discovery and place them in pristine glass boxes. Today, with much already labeled and learned, we're set to create our own cabinets of curiosity, and hearken back to the joy of discovery that once was.

This season, Galia Lahav Couture Evening couples clinical inspirations with innovation, and employs new techniques with an inherent savoir-faire, for a range of pieces that hint at these otherworldly wonders. The designs portray a mix of elements drawn from the ocean's depth, as well as a variety of artistic object.

Galia Lahav seek to blur boundaries, redefine terminology, and reconsider fashion's key categories, while maintaining a logical flow between casual garments, cocktail dresses and luxurious gowns. Our collection of curiosities includes unconventional silhouettes- from voluminous trousers and billowing sleeves to new takes on pleating. Expect colors such as deep blues, hues of poppy, soft nudes and touches of elemental metallics.

Expect the unexpected.



No.1

ORCA

Leather kimono & Pants

Navy blue kimono top, cinched at the waist with a wide leather belt and skinny navy blue leather pants with a side slit over the ankles.



No.2

LOTUS
Military jacket

Deep grey and denim blue brocade military jacket, with front pockets, buttons and brocade belt.



No.3

LOTUS

Jumper jacket & Mini skirt

Brocade strapless wrap mini dress, in shades of dark grey and denim blue. The Jacket is an over sized jumper top with voluminous sleeves, made of deep grey and denim blue brocade, with metallic band accents.



No.4

CLOAK & DAGGER

Velvet mini dress

Black velvet off-the-shoulder short dress with gathered voluminous and a waist leather belt.



No.5

BAY

Jumpsuit, Lace kimono & Belt

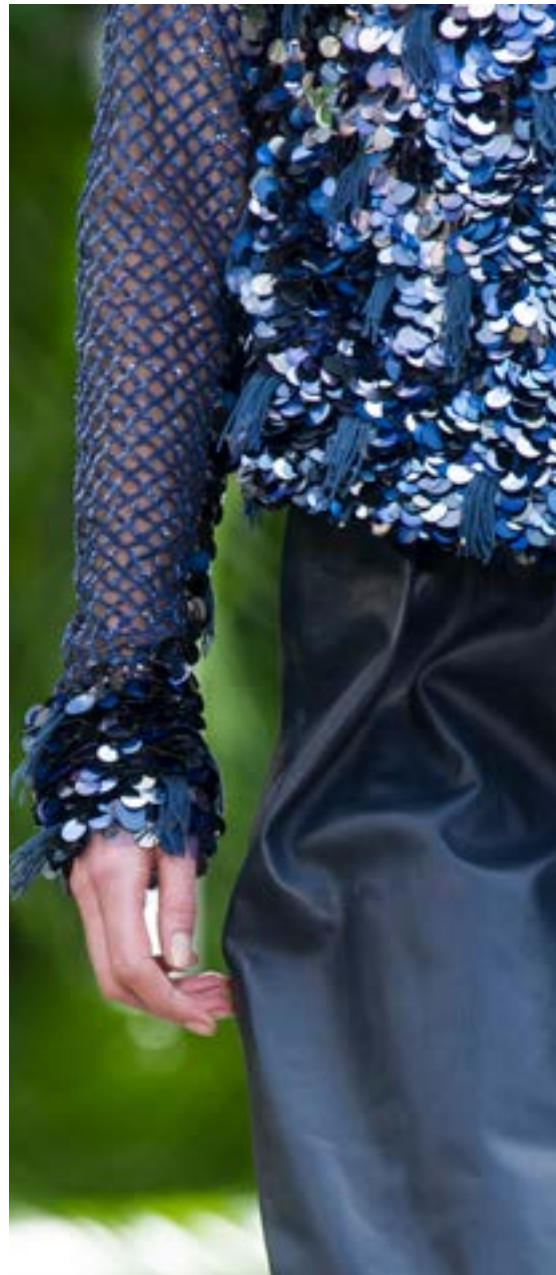
Black crepe jumpsuit, with a plunging v-neckline fastned at the waist, with a black leather corset belt and a sheer lace robe jacket topping it, made of black tulle, embroidered and adorned by navy blue velvet accents.



No.6

ADRIANE
T-shirt & Leather pants

Navy blue and gunmetal colored sequined T-shirt, combined with sequined mesh effect embroidery, paired with 3/4 over-sized leather blue pants.



No.7

LALA
Jacket & Dress

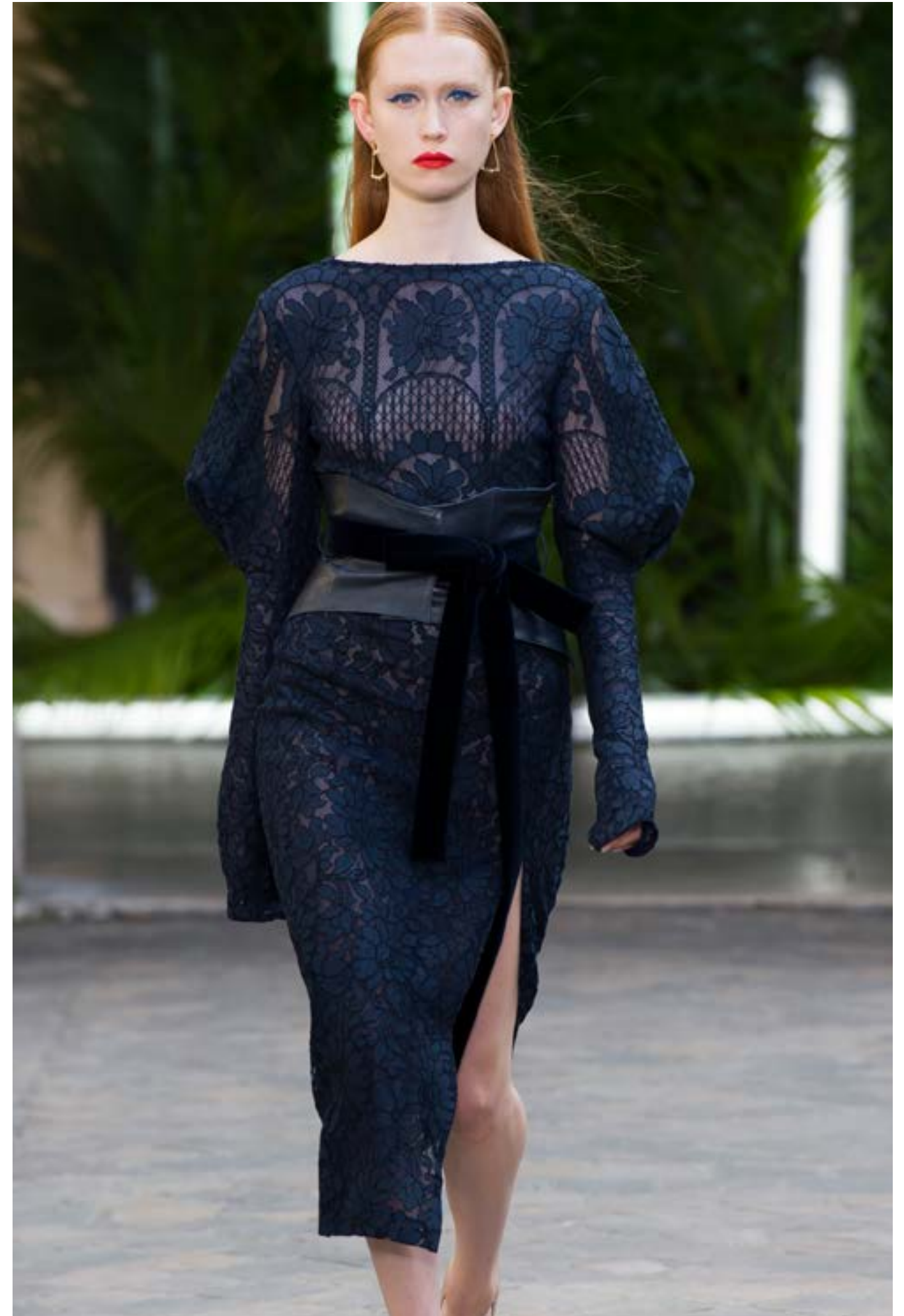
Navy blue velvet jacket with puffer sleeves and a belt, topping a sheer navy blue silk tulle dress, hand embroidered with navy blue sheer flowers.



No.8

TARA
Dress & Belt

Navy blue French lace dress with a col-en-bateau, puffed sleeves and a side slit. The dress has an outer leather corset.



No.9

MARNIE AQUA

Sequined dress

Aqua colored mini dress, front and back V and batwing sleeves. The dress is entirely embroidered with hand-cut sequins in various sizes, with touches of small nude flounces and coral colored fringes.



No.10

HURLEY
Top & Skirt

Nude leather off-the-shoulder gathered top, with a leather waist band and a high waisted mid-length made of nude leather with multiple slits.



No.11

ATHENA & NET TOP
Mini dress & T-shirt

Nude leather wrap mini dress with an undershirt made of nude spider-web tulle and lobster claws embroidered shoulder accents.

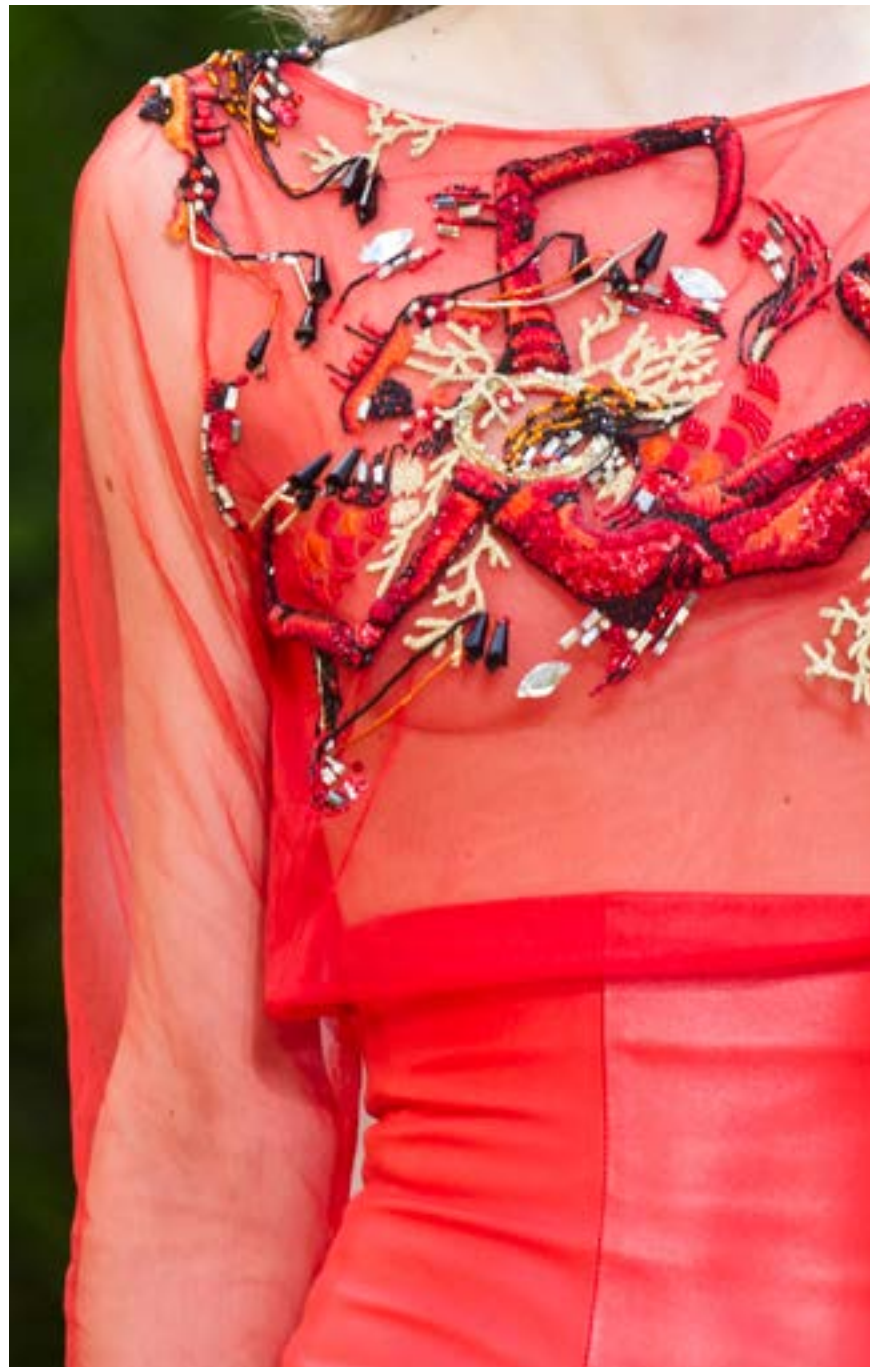


No.12

SEBASTIAN

Top & Skirt

Poppy red sheer tulle mid-drift length t-shirt with lobster claws embroidery, paired with a high waist poppy red leather knee length skirt, with multiple slits.



No.13

ARIEL MINI
Sequined dress

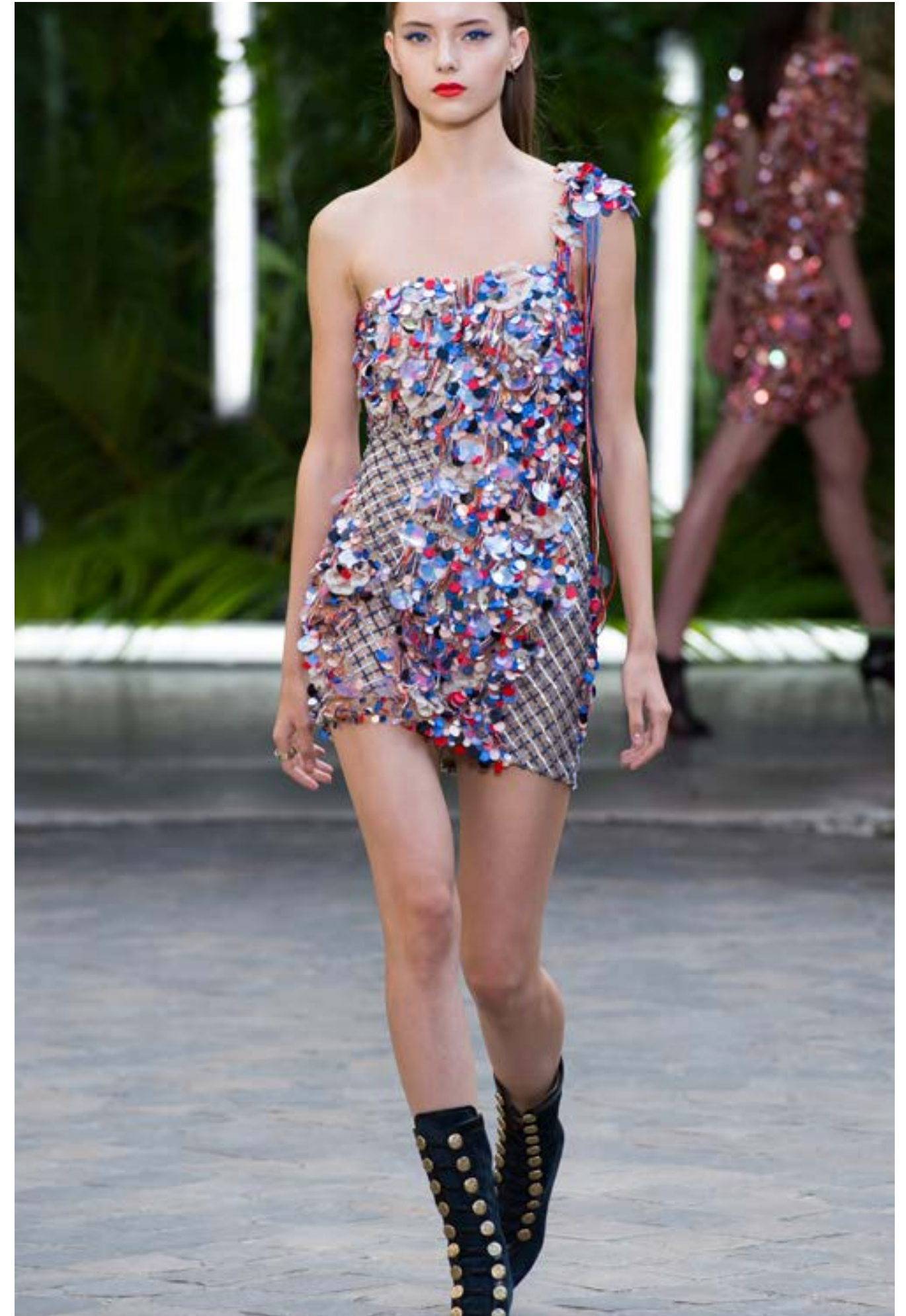
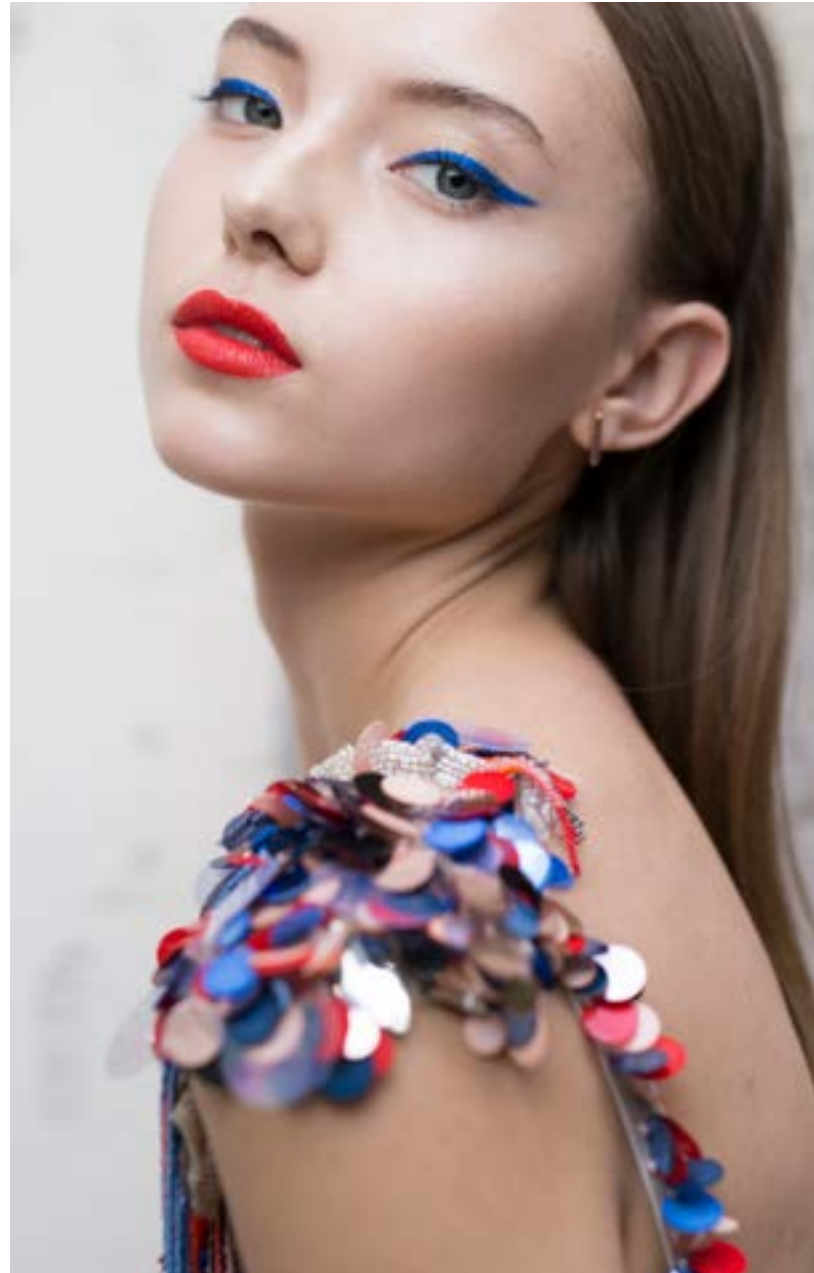
Red, nude and black sequined mini dress. The dress is a hand-cut sequins in various sizes with a V neckline front and back.



No.14

MARNIE
Sequined dress

Hand embroidered sequined mini dress, with fish scale sequins in various colors, blue and silver mesh motifs with a straight neckline and one shoulder adorned with sequined brooch and beaded sequins in various colors.



No.15

REEF

Kimono & Underskirt

Poppy red double-crepe kimono shirt-dress with bell sleeves and a sheer spider-web tulle underskirt. The dress is tied at the waist with a crepe belt.



No.16

KAILEE
Top & Skirt

Deep plunging v-neckline nude spider-web tulle bodysuit with a red coral embroidery, paired with a sheer nude spider-web embroidered skirt, with a red coral embroidery and nude leather waistband.

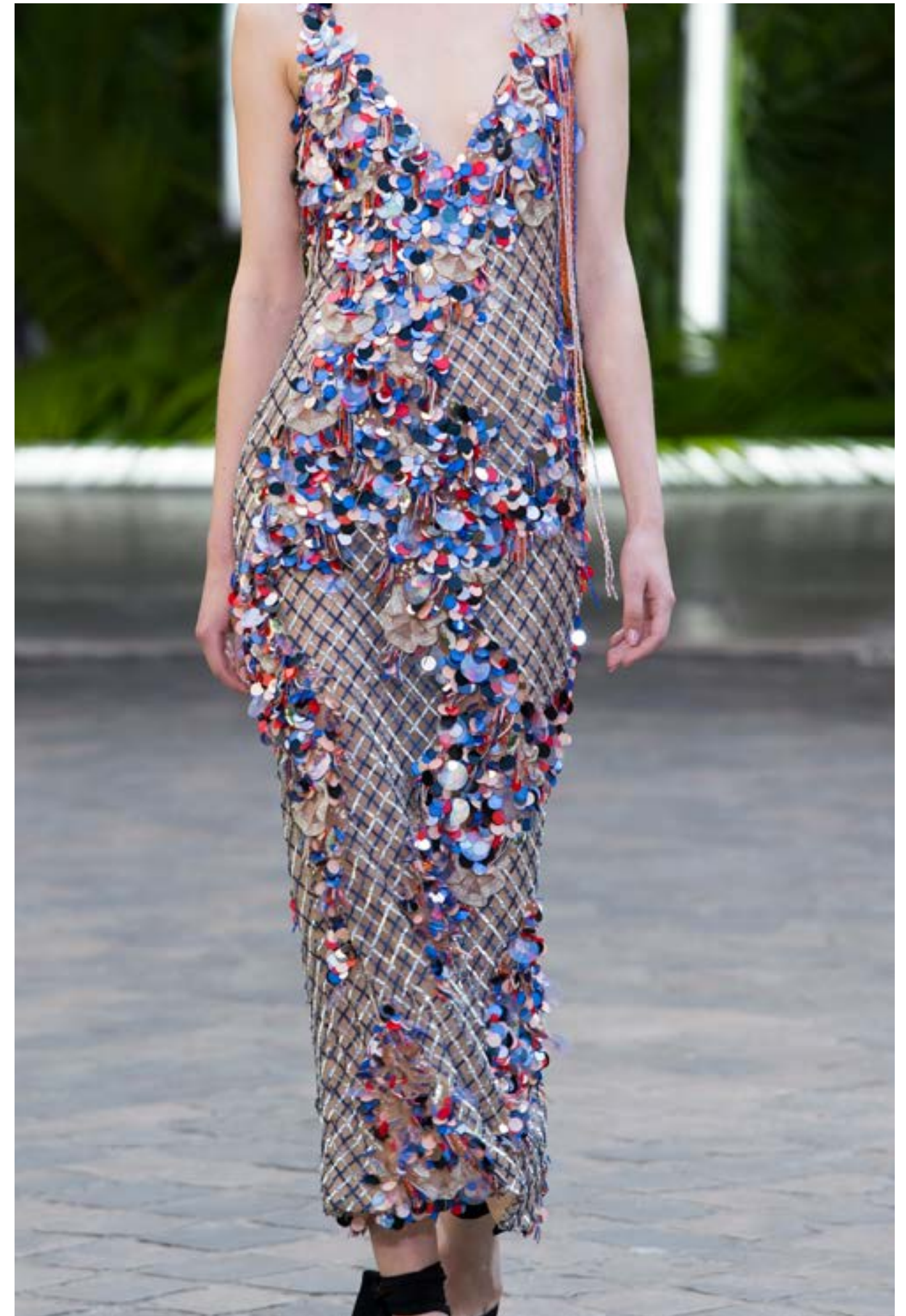


No.17

MARNIE COLUMN

Sequined 7/8 gown

Hand embroidered sequined column gown, with fish scale sequins in various colors, blue and silver mesh motifs with a v-neckline and one shoulder adorned with sequined brooch and beaded sequins in various colors.



No.18

FLOUNDER
Crepe dress & Belt

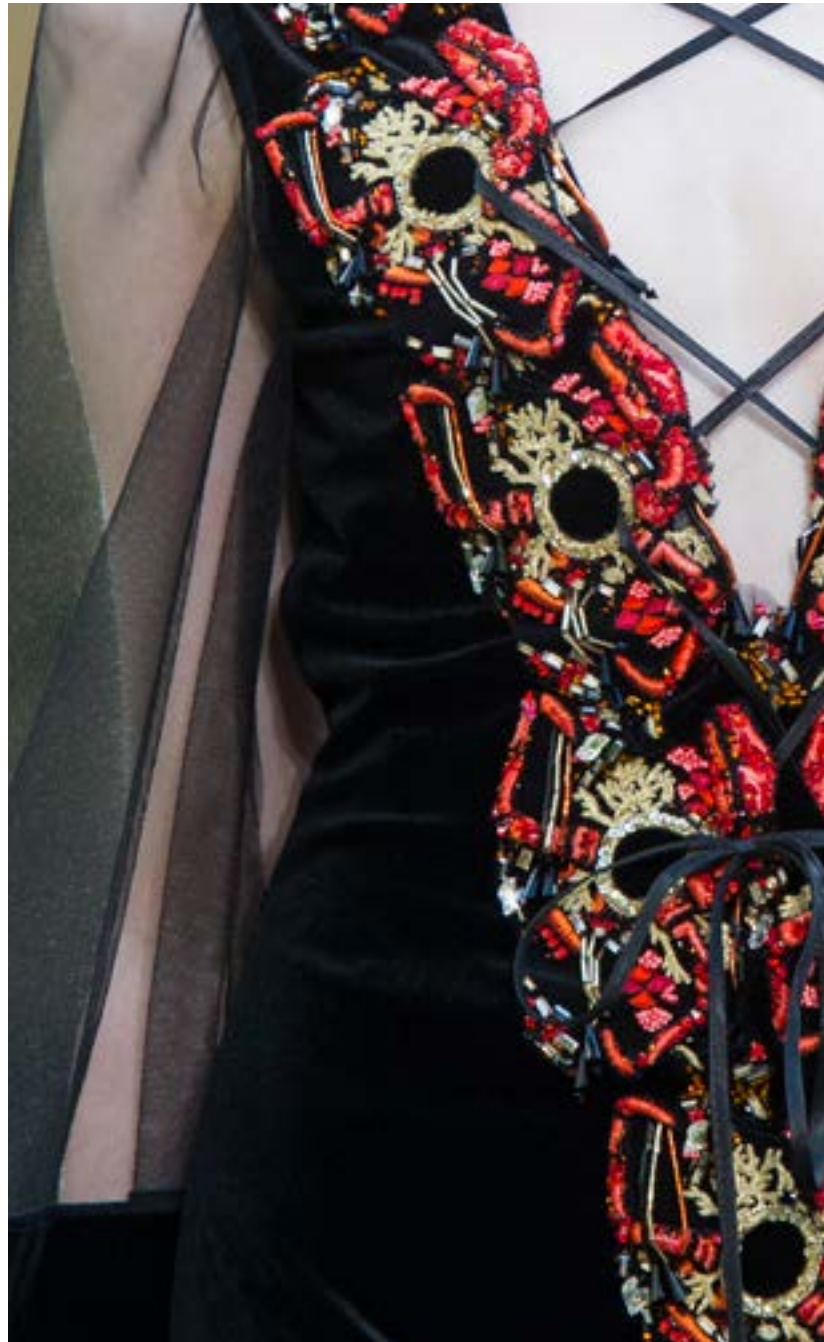
Poppy red double crepe gown, with a narrow front cleavage slit. The shoulders and back have a flounce detail which meets the center back and a waist accent of red leather outer corset.



No.19

TIP & DASH
Gown

Black velvet wrap gown with a plunging v-neckline, adorned by lobster claws and eyelet embroidery, creating a front lacing detail. The dress has sheer voluminous sleeves with a velvet cuff and a sheer tulle back.



No.20

NORI
Top & Skirt

Sheer black silk tulle off-the-shoulder draped corset, with dramatic embroidered sleeves and a wide black sheer tulle skirt



No.21

JAVA
Top & Pants

Black embroidered tulle off-the-shoulder and coral details paired with black crepe pants.



No.22

THE MARLIN
Dress & Vest

Semi sheer tunic dress made of black tulle entirely embroidered with large scale corals in shades of black, red and gold. Topped with a 3/4 military black leather vest.



No.23

HEART OF THE SEA

Strapless top, Pants & Belt

Strapless black corset embroidered with a coral detail, highlighted at the waist with a red leather belt, paired with black crepe palazzo pants.



No.24

FINN

Trench mini dress

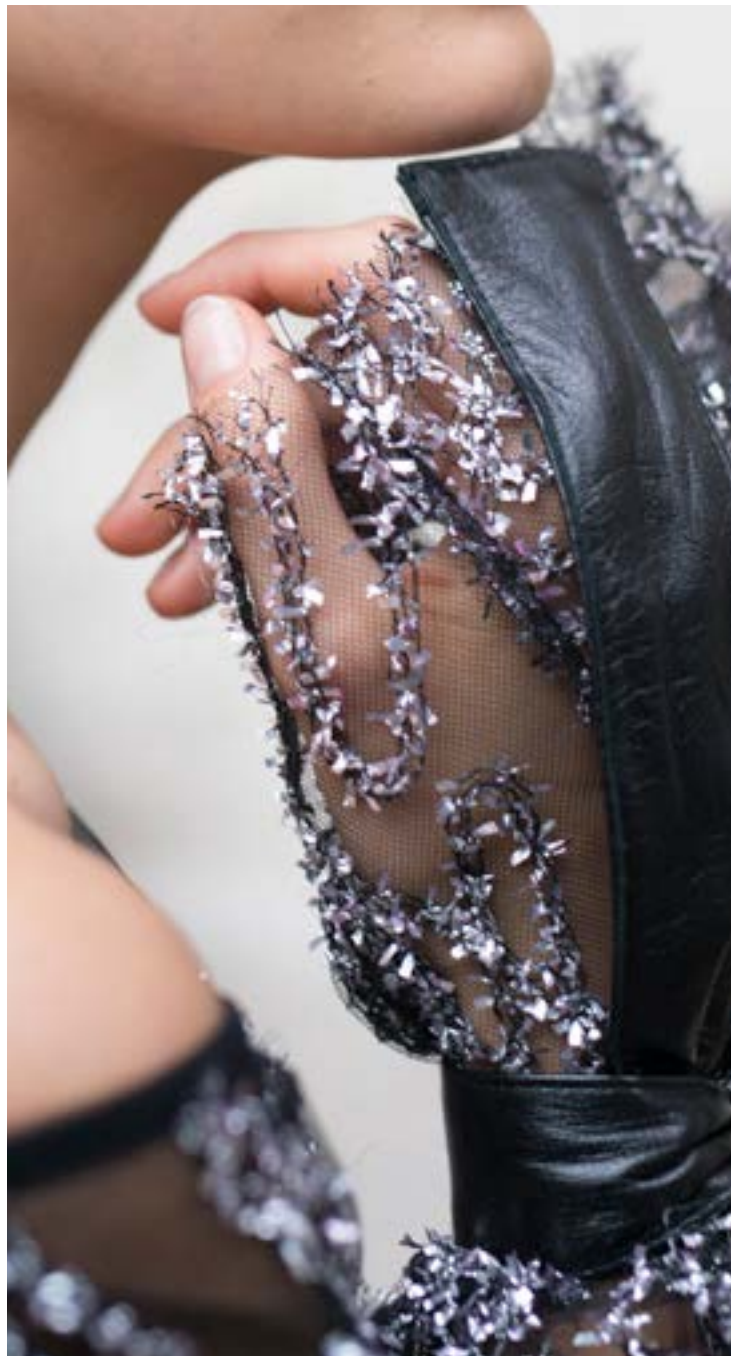
Black leather tailored trench dress, with balloon sleeves and a belt.



No.25

ROMI
Top & Skirt

Sheer black 7/8 tulle skirt, embroidered with silver & blush chord embroidery with a long sleeved off-the-shoulder top which has flounce details and black leather bows cuffs.

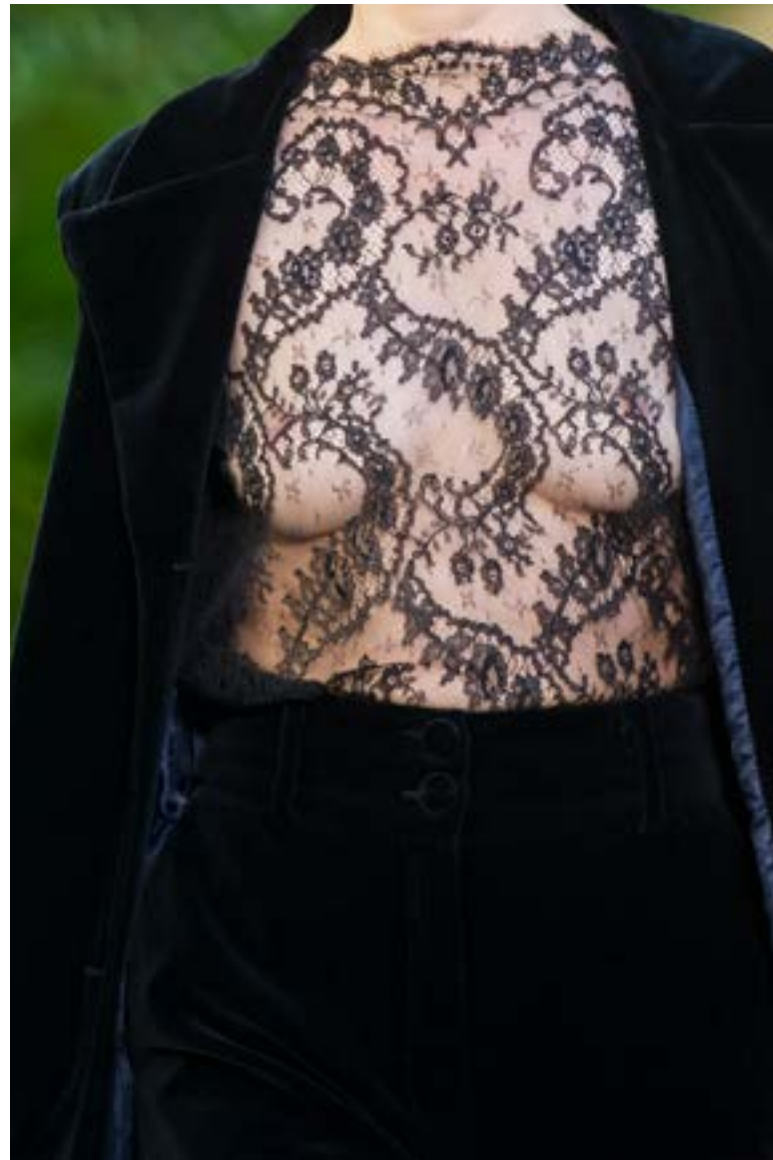


No.26

DORIANNE

Velvet smoking jacket, T-shirt & Pants

Black French lace T-shirt with cap sleeves, topped with a full length black velvet smoking masculine jacket paired with flared black velvet pants.



No.27

SANTIAGO

Halter dress

Sheer halter neck gown, made of two kinds of embroidered tulle, in a sequined stripe pattern and a floral lace pattern, with navy blue velvet flowers. The dress has a low plunging v-neckline, open back and a pleated skirt, with an embroidered belt.



No.28

MOANA

Robe jacket & Pants

Navy blue crepe robe jacket with flunce detail sleeves fastned with a wide black leather outer corset and navy blue crepe palazzo pants.



No.29

URSULA
Satin dress

Blue heavy high-slit satin wrap dress with a plunging v-neckline, loose sleeves, a slit and bow details.



No.30

AADI

Brocade trench dress

Metallic nude and navy blue china print brocade jacket-dress, with a tailored collar fastned at the waist with a navy blue velvet band.



No.31

CAMELLIA

Smoking coat

Metallic nude and navy blue china print brocade over-sized kimono coat, with accents of navy blue velvet in the pockets, cuffs and a detachable puffer collar. The coat is paired with a full length sheer navy blue sheer tulle skirt.



No.32

SLOANE

Kimono & Leather pants

Stony rose devore silk chiffon with golden rose pattern kimono dress, with wide bell sleeves tightened at the front, chiffon lacings and a wide bowed belt. Paired with skinny black leather pants.



No.33

QUINN
Kimono gown

Stony rose chiffon devore with golden rose details kimono dress, fastned at the waist with a stony rose chiffon belt.



No.34

EVERLASTING

Corset top & Skirt

Black tulle embroidered with taupe velvet floral appliques corset, off-the-shoulder black silk tulle flounces and a sheer wide skirt made of black tulle a taupe velvet appliques.



No.35

O'KEEFFE

Halter gown

Black & White jacquard silk organza with a Georgia O'keeffe inspired floral pattern gown, with a halter top, plunging v-neckline, voluminous pleated skirt, a side slit and a grosgrain ribbon tied at the waist.



No.36

O'KEEFFE TOP

Top, Skirt & Belt

Strapless top with flounce off-the-shoulder asymmetrical detail made of black & white jacquard silk organza with a Georgia O'keeffe inspired floral pattern, paired with a black organza skirt and a leather wide belt.



No.37

QUINN
Kimono & Pants

Cloud blue silk chiffon devore with golden rose details, kimono top and a belt, paired with wide pajama-style pants with a front laced gathering detail.



No.38

BLUE QUINN
Kimono & Skirt

Cloud blue chiffon devore kimono robe top with wide sleeves, a sheer black silk tulle skirt and a sheer black belt.



No.39

MIKAELA
Top & Skirt

Gunmetal silk organza with a jacquard floral detail in navy blue corset top, with off-the-shoulder silk tulle flounces and balloon sleeves, paired with a full length pleated skirt made of gun metal organza and jacquard floral details.

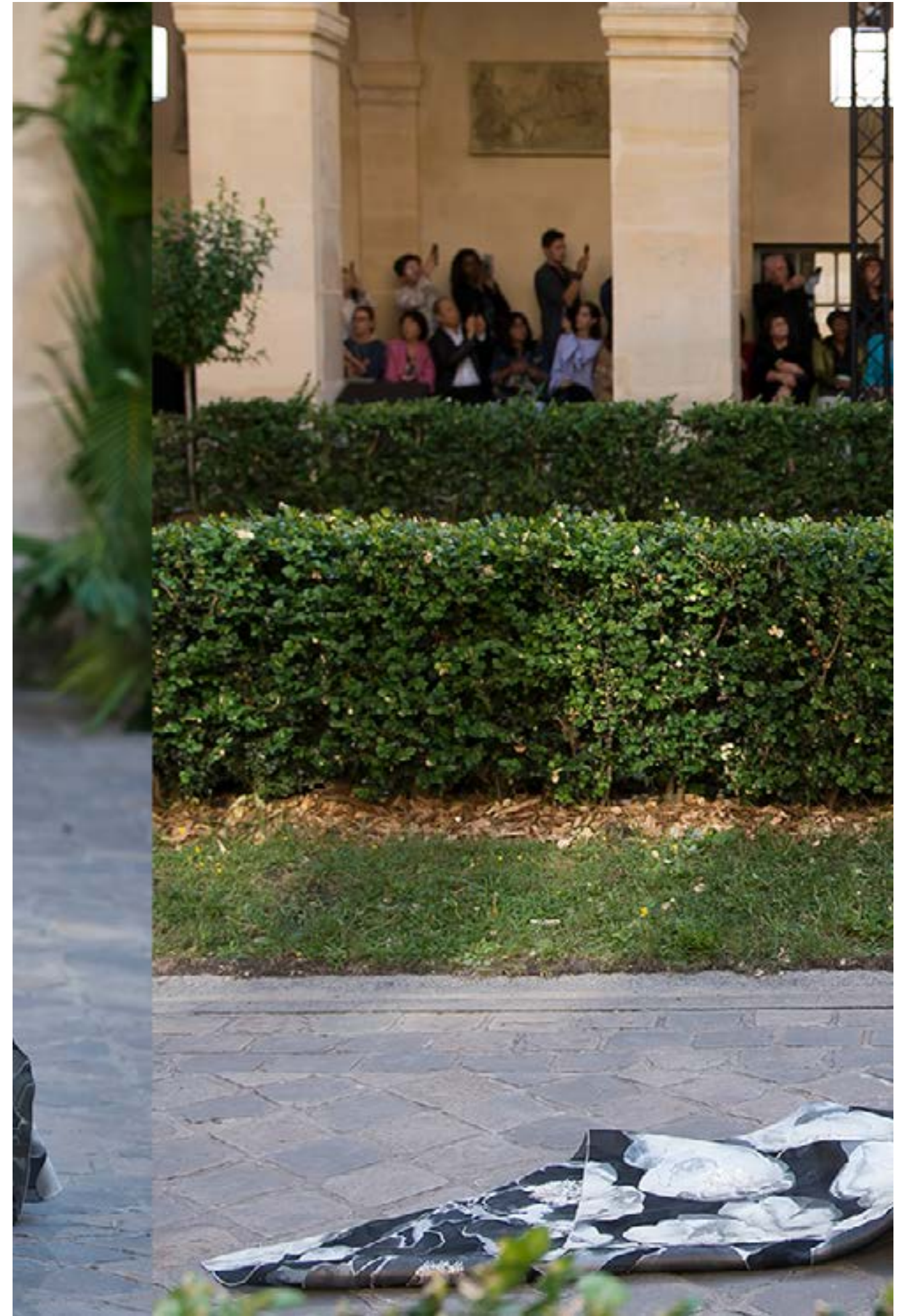


No.40

O'KEEFFE MINI

Mini dress

Draped Black & White jacquard silk organza with a Georgia O'keeffe inspired floral pattern mini dress, with a side train and flounced off-the-shoulder sleeves.





GALIA LAHAV

HOUSE OF COUTURE

THANK YOU!

www.GALIALAHAV.com